



## Author Queries Form

Query no.	Details required	Author's response
Q1	“the clinic of the disease”: “the clinicality of the disease”	
Q2	“I measured the distance from proximal points”: not clear.	
Q3	Please expand the term “MRI” if applicable.	
Q4	it looks the word “duodenum” is missing here “narrowed segment of the ..... could be measured. Please check.	
Q5	The image used in Figure 3 has part labels “A and B”; however, the part labels are missing in the caption. Please either provide a revised figure or modify the caption, as necessary.	
Q6	“Deep fixid folds”: “Deep fixed folds”?	
Q7	“Thus, this radiograph does not correspond to the concept. . . .”: Make sure that sentence is complete and conveys the intended meaning clearly.	
Q8	“The statement that in AMA is <25 should be suspected of SMA, is the result of not conscientious research”: should this be “The statement that an AMA <25 should be suspected of SMA is the result of nonconscientious research”?	
Q9	“A patient with SMA thrombosis (red arrow) has a large volume of adipose tissue pushed the anterior wall and colon forward to 13.2 cm”: not clear.	
Q10	Check if the edit made in line 428 is fine.	
Q11	If “duodenitis” and “duodenal ulcer” do not refer to the same condition, there should be a seria comma in “duodenitis or duodenal ulcer.”	
Q12	“hydrochloric acid provokes by the food ingredients”: “hydrochloric acid is provoked by the food ingredients”?	
Q13	Please specify the insertion of the opening quote in line 644.	
Q14	“the high-dose PPI therapy”: “the high-dose PPI therapy is recommended”? Or should the sentence that follows be jointed with this sentence?	
Q15	Please provide the number for the Ref. (15).	

## REVIEW

# Hypersecretion of hydrochloric acid as a cause of superior mesenteric artery syndrome. Review.

**Michael D. Levin\***

Department of Pediatric Radiology of the 1-st State Hospital, Dorot Medical Center for Rehabilitation and Geriatrics, Netanya, Israel

**\*Correspondence:**Michael D. Levin,  
nivel70@hotmail.com;  
michael.levin@dorot.health.gov.il**Received:** 07 February 2024; **Accepted:** 23 February 2024; **Published:** xx March 2024

It is currently believed that the cause of superior mesenteric artery syndrome (SMAS) is compression of the duodenum in the angle between the aorta and superior mesenteric artery (SMA). It is recognized that a decrease in aortomesenteric angle (AMA)  $<25$  and intervascular distance  $<8$  mm, caused by fat loss, is characteristic of SMAS. Based on these statements, surgeons operate on patients with symptoms of dyspepsia only based on a reduction of AMA. This study is devoted to the analysis of the literature, including four own studies on this issue.

**Results:** Measurement of the length of the constriction in the third part of the duodenum on radiograms from available sources showed that its true length ranged from 2.5 to 4.2 ( $3.30 \pm 0.15$ ) cm and began a few centimeters cranial to the AMA. Therefore, it could not have been caused by compression in the AMA. In terms of length ( $3.20 \pm 0.15$  cm) and location, this constriction corresponded to Ochsner's sphincter, which normally short-term contracts to prevent the penetration of an acid bolus into the jejunum. Conscientious studies have shown that AMA is proportional to BMI, i.e., a decrease in AMA is observed in all thin people. An analysis of 211 cases of SMAS made it possible to differentiate two types of diseases. In 101 patients, the disease occurred acutely 1–53 ( $8.2 \pm 1.9$ ) days after stressful situations, accompanied by a catabolic reaction and hypersecretion of hydrochloric acid. In 110 patients, SMAS developed 3–72 ( $17.2 \pm 3.2$ ) months after the diagnosis of acid-dependent diseases. The analysis led to the conclusion that hypersecretion of hydrochloric acid causes an increase in tone and hypertrophy of the Ochsner's sphincter and the ~~clinic of the disease~~ depends on the varying degree of Ochsner's sphincter dyskinesia. New ideas about the etiology and pathogenesis of the so-called SMAS have made it possible to propose a tactic for the diagnosis and treatment of Ochsner's sphincter dyskinesia, where there is no place for surgical treatment.

**Keywords:** duodenal physiology, superior mesenteric artery syndrome, Ochsner's sphincter dyskinesia, Wilkie syndrome, pathophysiology

## 1. Introduction

Currently, all authors of articles adhere to the hypothesis Professor Carl von Rokitsansky (1842), which explains the presence of clinical and radiological symptoms of obstruction in the 3rd part of the duodenum, by its compression in the aortomesenteric angle (AMA). Therefore, this syndrome has received the name "Superior mesenteric artery syndrome" (SMAS). There are many contradictory statements in this

hypothesis, which will be discussed below. To understand the pathological physiology of SMAS, it is necessary to focus on the normal physiology of the duodenum.

## 2. Duodenal motility

In the duodenum, between the pyloric sphincter (PS) of the stomach and the duodenojejunal junction, four sphincters function, which protects the small intestine from the

aggressive effects of hydrochloric acid. If the bolus would pass through the duodenum as quickly as through the esophagus, then an extremely low pH bolus would cause irritation of the jejunum or, at best, a dumping syndrome (1).

## 2.1. On the physiology of the sphincters of Ochsner and Kapanji

Ochsner described in detail the functional sphincter in the 3rd part of the duodenum in 1906. During gallbladder and stomach operations he found that “in many cases, the duodenum is distended with gas to a point just below the entrance of the common duct, while below this it is contracted, and upon raising the transverse colon and finding the origin of the jejunum, this portion of the intestine will also be found in a contracted condition. In all these specimens, there is also a marked thickening of the intestinal wall at a point 2–4 cm below the entrance of the common duct, and a careful study of this thickening demonstrated the presence of a marked increase in the circular muscle fibers. These facts pointed toward the presence of a sphincter at this point whose physiological function would consist in providing for a means of retaining the chyme in the upper portion of the duodenum sufficiently long to provide for thorough mixing with bile and pancreatic fluid.” Ochsner believed that “under certain forms of irritation or inflammation of the gallbladder or ducts, this duodenal sphincter had taken up an action” (2). The 12 out of 14 patients described by Ochsner were diagnosed with gastric ulcer (1), duodenal ulcer (2), cholecystitis (7), chronic appendicitis (5), and pancreatitis (7). All patients had a dilated duodenum, and 6 of them had a gastric dilatation (2). Kapanji described the sphincter in the 2nd part of the duodenum and explain its functional significance (3).

Kapanji’s sphincter and Ochsner’s sphincter are widely known in the scientific literature in French and Russian (4). Oddi’s sphincter is the only sphincter of the duodenum that is described in the English-language literature. The pathology of this sphincter is closely related to the pathology of the bile and pancreatic ducts.

## 2.2. X-ray studies of the duodenal sphincters

The motility of the Ochsner’s sphincter is a periodic change of contraction and relaxation, depending on the pH of the bolus. Normally, radiologists cannot see a contraction of the Ochsner sphincter because they use an acid-free contrast agent. I have done research adding 3g Vitamin C to 200 ml of barium. The acid caused Ochsner’s sphincter to contract and this made possible to determine and measure of its length. It turned out that in length ( $3.20 \pm 0.15$  cm) and location it corresponds to the length ( $3.30 \pm 0.15$  cm) ( $P > 0.2$ )

and location of the narrowing in the duodenum at the SMAS (4, 5).

## 2.3. The normal duodenal motility

The post bulbar sphincter (PBS), together with the pyloric sphincter (PS), provides evacuation of the chyme from the stomach as portions of a certain volume (Figure 1A). When the acid bolus reaches the Ochsner’s sphincter, which is in the 3rd part of the duodenum, it causes of its contraction, which prevents entering aggressive chyme to the jejunum (Figure 1B). As a result of the Ochsner’s sphincter contraction, the bolus is thrown cranially, but Kapanji’s sphincter contraction is again approaching Ochsner’s sphincter. This pendulum movement of the bolus between the Ochsner and Kapanji sphincters occurs several times. During this time, the chyme mixes with bile and pancreatic juice, which raise the pH (Figure 1C) of the chyme. When the pH reaches a level that is safe for the jejunum, Ochsner’s sphincter opens, and bolus passes into the jejunum (4–6). The portioned flow of bile and pancreatic juice into the intestine between the Ochsner and Kapanji sphincters is provided by the sphincter of Oddi. In addition, it prevents the penetration of duodenal contents into the bile ducts (Figure 1).

## 3. Analysis of the vascular hypothesis of the pathogenesis of SMAS

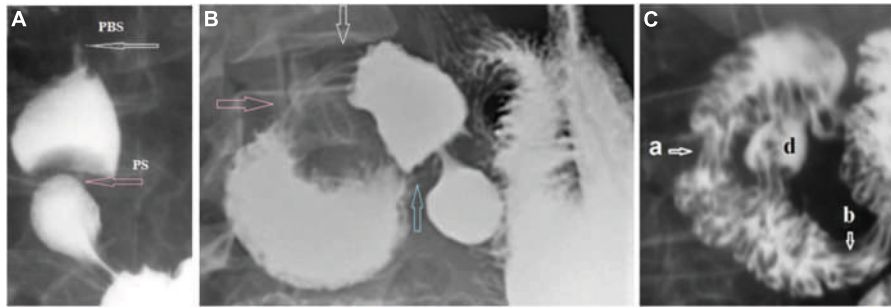
### 3.1. Analysis of radiological studies

Ever since Professor Carl von Rokitansky (1842) advanced the vascular hypothesis, it is believed that obstruction of the 3rd part of the duodenum is caused by intestinal compression in the aortomesenteric angle (AMA). The abdominal aorta is located near the middle of the vertebra (Figure 2B). Its width is approximately 2 cm, and the width of the superior mesenteric artery (SMA) is 0.5 cm. The length of the constriction that these vessels can create cannot exceed 1 cm. I measured the distance from proximal points the sharp contraction in the 3rd part of the duodenum to the location of the SMA, i.e., up to the middle of the 3rd lumbar vertebra (L-3) on 35 radiographs, CT, and MRI, published in PubMed and PMC. On radiographs, all the values are greater than the real ones. We calculated the true value by multiplying the value measured on the radiograph by the projection increase factor. It is equal to the ratio of the true height of the first lumbar vertebra (2.2 cm in adults) to the value of its image on the radiograph. When analyzing CT and MRI, the coefficient is equal to the ratio of the true diameter of the abdominal aorta (2 cm) to the value of its image on the scan. In 29 (83%)

166  
167  
168  
169  
170  
171  
172  
173  
174  
175  
176  
177  
178  
179  
180  
181  
182  
183  
184  
185  
186  
187  
188  
189  
190  
191  
192  
193  
194  
195  
196  
197  
198  
199  
200  
201  
202  
203  
204  
205  
206  
207  
208  
209  
210  
211  
212  
213  
214  
215  
216  
217  
218  
219  
220

Q2

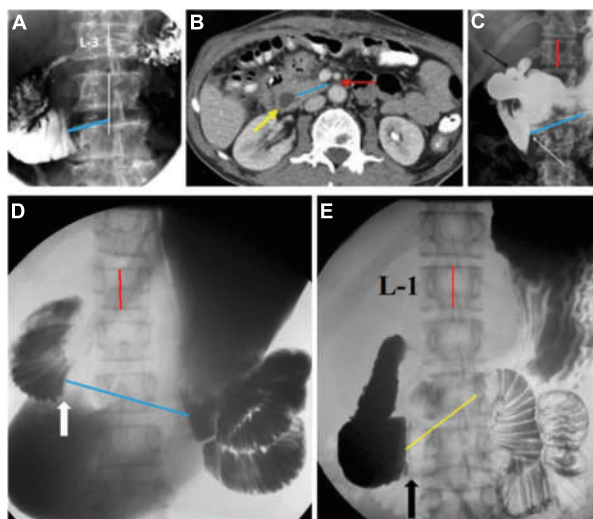
Q3



**FIGURE 1** | X-ray demonstration of the duodenal sphincters. **(A)** During antral contraction, the duodenal bulb fills to the limit, after which the pyloric sphincter (PS) contracts, stopping the flow of barium from the stomach into the bulb. Then, during the peristaltic contraction of the bulb between the PS and PBS, the pressure rises, which causes the PBS to relax, and the bolus penetrates the 2nd part of the duodenum. **(B)** In an elderly patient with duodenal dyskinesia the white arrow shows PBS location. An expansion of the duodenum is determined between the Kapanji's sphincter (pink arrow) and the Ochsner's sphincter (blue arrow). **(C)** The duodenum was emptied, but the barium remained in deep folds because the barium-filled bowel was very wide. Two zones of contraction with longitudinal folds are visible: (a) the Kapanji's sphincter, and (b) the Ochsner's sphincter. The juxtapapillary diverticulum (d) is located between them. These diverticula result from the extrusion of the mucosa between the muscular fibers. Thus, this diverticulum is evidence of high pressure that occurs between contracted sphincters Kapanji and Ochsner.

cases on X-ray examination or on CT and MRI, the length of the narrowed segment of the duodenum ranged from 2.5 to 4.6 cm ( $3.30 \pm 0.15$  cm) and always started a few centimeters to the right of L-3 (**Figures 2A–D**) (4–7).

Only in 6 (17%) of 35 cases where the length of the narrowed segment of the could be measured, it looked short, since the place of obstruction was near the midline of the vertebra and its length was within 1 cm. However, as seen in (**Figure 2E**), the narrowed segment of the duodenum can be located to the left of the midline of the vertebra, which is confirmed by Ochsner's observations during surgery.



**FIGURE 2** | X-ray examinations of patients with a "diagnosis" of SMAS. **(A)** A patient after laparotomy. The beginning of the narrowed segment of the duodenum (blue line) is located 3.2 cm from the midline L-3. His CT **(B)** the narrowed segment is located far from the AMA (red line). **(C)** In a patient with a bulb ulcer (black arrow), the narrowed segment of the duodenum begins to the right of L-3 (white arrow) and ends to the left of L-3. Its length is 4.6 cm. **(D)** The distance from the duodenum to the jejunum is 6.5 cm. **(E)** In this patient the narrowed segment of the duodenum starts to the right of L-4 and ends to the left of the L-3 midline. Its length is 4.9 cm.

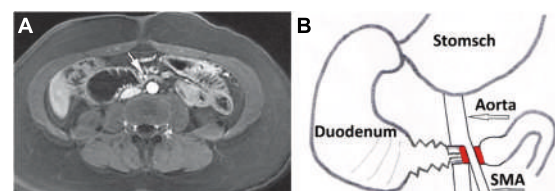
Secondly, the X-ray can show the moment opening of the Ochsner's sphincter, which happens when there is high pressure above it (**Figures 3A, B**).

Carl von Rokitsansky proposed a vascular hypothesis for the pathogenesis of the so-called SMAS almost 200 years ago, when there were no radiological research methods that we use now. Mathematical analysis of radiological studies showed that the narrowed segment of the duodenum in location and length ( $3.30 \pm 0.15$  cm) fully corresponds to the location and length ( $3.20 \pm 0.15$  cm) of the Ochsner sphincter ( $P > 0.2$ ).

### 3.2. Analysis of the clinical picture

It is argued that the cause of the compression of the duodenum in the AMA is rapid weight loss and the disappearance of adipose tissue, which normally supposedly push the SMA away from the aorta (8). This statement is hypothetical in nature, since, firstly, no evidence is provided to support this thesis. On the contrary, analysis of the literature does not support this claim. For example:

In a significant percentage of patients with SMAS, the mean body mass index (BMI) was within normal limits.



**FIGURE 3** | MRI of a patient with SMAS and its schem. The second part of the rectum is expanded to 4 cm. Deep fixed folds in the third part of the duodenum indicate rigid duodenitis. This picture, resembling a hedgehog, was the same in three patients. The moment of opening of Ochsner's sphincter was probably recorded at high pressure in the expanded duodenum above it.

In a series of 14 children, it was 21.3 kg/m<sup>2</sup> (range 13.3–30.4 kg/m<sup>2</sup>). The mean weight loss before diagnosis was 3.8 kg (range 0–20 kg). No weight loss was found in 50% of the patients (8).

Among patients with acute development of the disease, i.e., within 1–53 (8.2 ± 1.9) days, conservative treatment was successful after 2–59 (13.4 ± 2.9) days in 88.9% of patients. First, it is obvious that during this time the volume of adipose tissue in the AMA could not change significantly. Second, repeated CT after resolution of clinical symptoms did not reveal any changes in AMA (9).

If soft adipose tissue appears between the aorta and the SMA, then how does it push forward the tense vessel and does not push back and squeeze more compliant duodenum?

### 3.3. Analysis of the significance of the aorto-mesenteric angle

All authors, referring to the article by Neri et al. (10), believe that the AMA value less than 25 is an important diagnostic feature of SMAS. However, the study, to which everyone refers, was carried out with numerous violations that do not allow us to consider its results reliable, that is, scientific. Studies with the AMA <25 were initially selected. No justification for the choice of this figure is provided. There are no characteristics of 50 healthy subjects (control group). The authors did not measure AMA for persons with different BMIs. Therefore, they had no reason to report normal boundaries at all. «The US detected reduced angles <25 in 29 of the 950 subjects (3.05%). X-ray with barium (Figure 4A) revealed compression on the third segment of the duodenum in 28 of 29 patients during the symptomatic period and in nine of 29 during the symptom-free interval» (10).

On the radiograph (Figures 4B, C), which Neri et al. (10) presented as the most demonstrative of 29, there are no signs of obstruction because neither the stomach nor the duodenum is dilated. Secondly, the narrowing that begins to the right of the vertebra has nothing to do with AMA. The contraction of the duodenum corresponds to the normal function of the Ochsner sphincter. This is confirmed by a similar observation by Eisenberg (11). ~~Thus, this radiograph does not correspond to the concept of SMAS and as well as all the conclusions of the article by Neri et al. (10) it is a falsification of the facts for confirming the invented limit of the AMA norm — 25.~~ Neri et al. state: - “The aortomesenteric angle is normally 25–60 [(2, 3, 6, 7, 10–12)] and the mean aortomesenteric distance of 10–28 mm [(1–3, 6, 7, 10–12)]. Subjects presenting an angle <25 and an aortomesenteric distance <8–10 mm may be affected by SMA syndrome” (10). However, in none of the cited references, there were studies on the magnitude of ARA in healthy individuals. Moreover, most of the links are descriptions of isolated cases. Thus, the conclusion of Neri et al. (10) that “Subjects presenting an angle <25 and an aortomesenteric distance < 8–10 mm may be affected by

SMA syndrome” is not justified, since most individuals with such indicators do not have SMAS.

Bhagirath Desai et al. (12) did a prospective study of 100 patients who had undergone CT scans for various other complaints. A strong positive correlation was found between BMI and the angle between the aorta and SMA. With BMI increase, the angle also increases. In 25% of patients, these rates were less than the norm. In third world countries, there are hundreds of millions of people with low BMI which does not increase the SMAS frequency. Thus, the AMA value depends only on the amount of fat in the body.

Based on the above, we can conclude that: (1) No one has researched the AMA value in healthy people of different ages and weights. (2) The value of AMA is proportional to BMI. (3) ~~The statement that in AMA is <25 should be suspected of SMA, is the result of not conscientious research.~~

### 3.4. How does the AMA change?

This question is very important, since another, even more improbable hypothesis about the role of adipose tissue in AMA has been proposed to support the vascular hypothesis. The diagram in Figure 5 in parts A and B shows the principle of this hypothesis. SMAS supposedly arises from the loss of adipose tissue in the AMA, which leads to compression of the duodenum, which passes through this angle. From this follows the principle of SMAS treatment, i.e., hyperalimentation, to increase the volume of adipose tissue and push the SMA anteriorly and thus make room for the duodenum. This hypothesis is rejected by the following evidence. (1) An increase in soft adipose tissue in the AMA cannot push back a tense vessel. (2) An additional volume of adipose tissue competes with the duodenum for space in the AMA, i.e., it can increase its compression. (3) Hyperalimentation can lead to an increase in adipose tissue only with a simultaneous increase in fat throughout the body. This means that for enough fat to appear in the AMA, the patient must gain tens of kilograms. This cannot be done not only in a few days, but also in many months, especially since we are talking about a violation of the patency of the duodenum. ~~(Figures 5A, B) provides further evidence that “when BMI of a patient decreases, there is a corresponding reduction in SMA angle and distance” (12, 13).~~

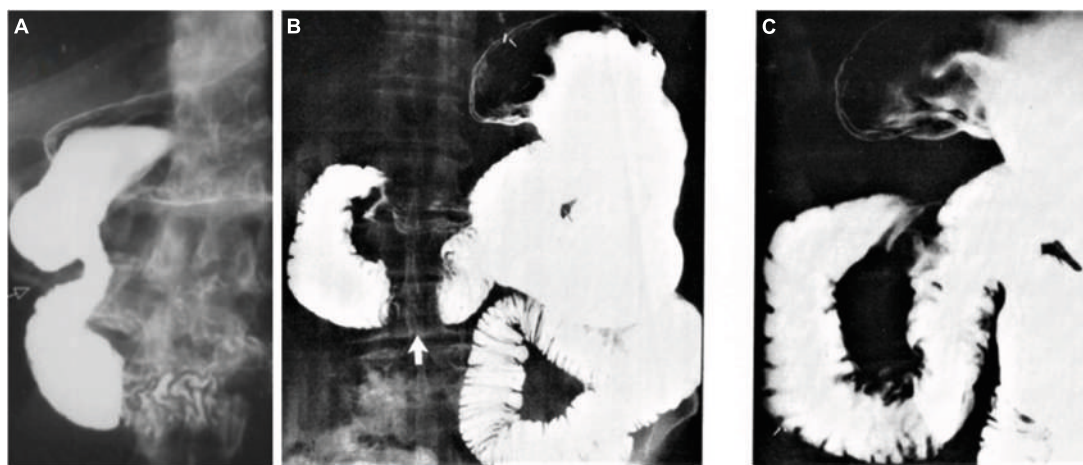
## 4. Clinical analysis of 227 cases of SMAS

I have analyzed 79 articles from PubMed and PMC describing 227 cases of SMAS from 1990 to 2015. Based on clinical data, all patients were divided into 2 groups. The 1st group consisted of 101 patients aged 3–81 (25.8 ± 3.4) years. The obstruction of the duodenum appeared in them 1–53 (8.2 ± 1.9) days after severe stressful events: complicated

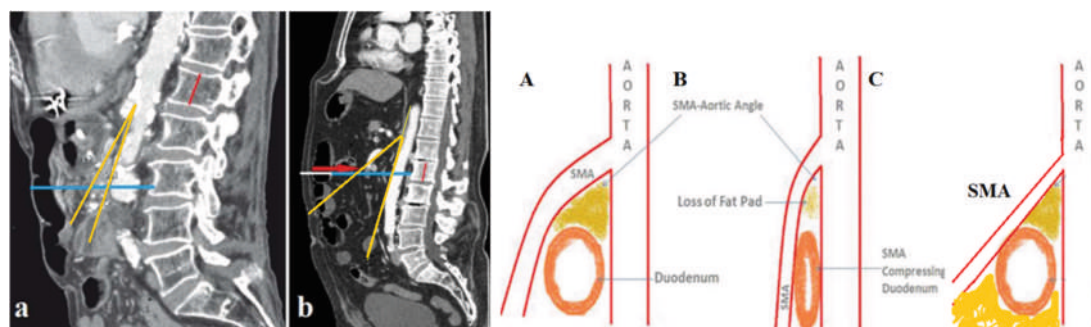
441 surgeries, burns, trauma, chemotherapy, etc. In 126 patients  
 442 of the second group aged 17–86 ( $36.7 \pm 2.2$ ) years, including  
 443 8 patients with anorexia nervosa, the duodenal obstruction  
 444 occurred after 3–72 ( $17.2 \pm 3.2$ ) months of the chronic  
 445 diseases. Almost all these patients had acid-related upper  
 446 gastrointestinal tract diseases. It became apparent that two  
 447 different processes can lead to the appearance of duodenal  
 448 obstruction (Table 1).  
 449  
 450

#### 4.1. 1st group

496  
 497  
 498 Acute development of symptoms was in the stressful  
 499 conditions, which in the catabolic stage are accompanied by  
 500 significant weight loss. This is especially often observed in  
 501 adolescents after surgery on the spine (6, 7). It is known  
 502 that stress states are accompanied by a decrease in the pH  
 503 of gastric 10 contents. In such cases, even high doses of  
 504  
 505



451  
 452  
 453  
 454  
 455  
 456  
 457  
 458  
 459  
 460  
 461  
 462  
 463  
 464  
 465 **FIGURE 4 |** (A) Radiograph from the article Neri et al. (10). The stomach and duodenum are not dilated. The contracted segment of the  
 466 duodenum begins to the right of the spine. (B, C). Radiographs from the textbook. Signed: “Normal patient with transient proximal duodenal  
 467 dilatation panel (B). Radiograph showing apparent obstruction third portion of the duodenum (arrow) suggesting the SMAS. (C) The view  
 468 obtained slightly later shows the duodenal sweep to be entirely normal” (11).  
 469



470  
 471  
 472  
 473  
 474  
 475  
 476  
 477  
 478  
 479  
 480 **FIGURE 5 |** Central sagittal scans (CT). The true height of the 1st lumbar vertebra (red line) is 2.2 cm. (A) In a patient with SMAS, the greatest  
 481 distance from the anterior abdominal wall to the spine is 8 cm (blue). (B) A patient with SMA thrombosis (red arrow) has a large volume of  
 482 adipose tissue pushed the anterior wall and colon forward to 13.2 cm (8 cm blue + 5.2 cm white). The SMA that supplies blood to the colon  
 483 together with the colon and mesentery is pushed forward, which leads to an increase in AMA (yellow angle). (A, B) Scheme of the generally  
 484 accepted hypothesis of the pathogenesis of SMAS, which contradicts physical laws. (C) Scheme of the increase in AMA because of pushing  
 485 the SMA along with the intestine and its mesentery.  
 486

487 **TABLE 1 |** Distribution of the patients with superior mesenteric artery syndrome (SMAS) depending on the duration of the disease.

Groups	Number of patients	Age (years)	M/W	Duration of the disease	Weight loss (kg)	BMI	Conservative treatment	Treatment time (days)	Surgery without conservative treatment
1st group	101	3–81 $25.8 \pm 3.4$	44/56	1–53 days $8.2 \pm 1.9$	3–17 $13.6 \pm 3.6$	14–21 $18.9 \pm 0.9$	88.9%	2–59 $13.4 \pm 2.9$	4%
2nd group	110	17–86 $36.7 \pm 2.2$	52/58	3–72 months $17.2 \pm 3.2$	3–29 $18.0 \pm 4.3$	15–28 $16.0 \pm 3.6$	39%	?	47%
	211	$p < 0.001$		$p < 0.001$	$p > 0.2$	$p > 0.2$			

proton pump inhibitors do not have an effect in improving gastric pH (14). Conservative treatment in conditions of partial obstruction of the duodenum was successful in 89% of patients after 2–59 ( $13.4 \pm 2.9$ ) days. Obviously, during this time, neither intravenous hyperalimentation, nor tube introduction of food into the small intestine could change either the total weight of patients or the volume of adipose tissue in the AMA. Moreover, after the restoration of patency in the duodenum, the distance between the vessels does not change (9). Therefore, the positive effect of conservative treatment is not associated with an increase in adipose tissue in the AMA, which does not support the hypothesis of the role of AMA in the pathogenesis of SMAS.

## 4.2. 2nd group

In patients of the 2nd group with functional dyspepsia, postprandial syndrome, and other peptic syndromes, the pathology is due to the hypersecretions of hydrochloric acid. They, in contrast to the patients in the 1st group, had a long history of the disease. Disturbance of the duodenal patency increased gradually: from slight disruption to complete obstruction. In these patients, as Ochsner showed, hypertrophy of the circular muscle layer of the third part of the duodenum distal to the sphincter of Oddi occurs. This may be the reason for the lower effectiveness of the short-term conservative treatment in patients of the 2nd group. As can be seen from Table 1, surgeons operated on the patients of the 2nd group, only based on a decrease in AMA ( $<25$ ), or the distance between the aorta and SMA ( $<8$  mm). In 47% of cases, the operation was performed without attempting conservative treatment. Conservative treatment was successful in 39% of cases, and in 14% of cases conservative treatment was short-term and ineffective. These patients were operated on. Thus, 61% of patients with peptic problems accompanied by duodenal dyskinesia were operated on only because they were thin or had no effect after short-term non-pathogenic conservative treatment (15).

## 5. Conclusion (Etiology, pathogenesis, diagnosis, and treatment of Ochsner's sphincter dyskinesia)

### 5.1. The above evidence leads to the following conclusions

1. The zone of contraction in the 3rd part of the duodenum with a length of 2.5–4.6 ( $3.30 \pm 0.15$ ) cm cannot be caused by compression of the intestine in the AMA, firstly, because between the aorta

with a diameter of 2 cm and the SMA with a diameter of 0.5 cm, the length of the compressed intestine cannot be more than 1 cm. Secondly, the beginning of the contracted segment of the duodenum is a few centimeters cranial to the AMA. In length ( $3.2 \pm 0.15$  cm) and localization, the contracted segment of the duodenum corresponds to the sphincter Ochsner, which normally contracts to prevent an aggressive low pH bolus from entering the small intestine. A prolonged contraction of the sphincter Ochsner, which disrupts the passage into the jejunum, indicates its dyskinesia.

2. Article 8. Biank and Werlin (8) identifying AMA  $< 25$  and distance between aorta and SMA  $< 8$  mm as proof of SMAS is based on false information and is untrue. These parameters are proportional to BMI. Surgeons relying on these parameters operate on patients with dyspepsia, duodenitis or duodenal ulcer without signs of obstruction. They produce a bypass duodenojejunostomy, because of which the aggressive chyme immediately from the stomach enters the jejunum, which inevitably leads to chronic enteritis.
3. The notion that the cause of SMAS is the loss of adipose tissue in the AMA and hyperalimentation over several weeks can lead to fat accumulation in AMA and to recovery does not withstand scientific scrutiny.

## 5.2. Etiology

~~Hypersecretion of hydrochloric acid provokes by the food ingredients. These provocateurs or stimuli includes delayed-onset diseases, that can be mediated by intestinal mucosal mechanisms involving not only IgE but also T cells, mast cells, and eosinophils that produce proinflammatory mediators. Atopic dermatitis, celiac disease, or eosinophilic GI diseases, such as esophagitis, gastritis, gastroenteritis, enterocolitis and proctitis” (16) belong to this kind of disease.~~ It turned out that under stress “mast cells (MC) are important effectors of brain–gut axis that translate the stress signals into the release of a wide range of neurotransmitters and proinflammatory cytokines, which may profoundly affect the gastrointestinal physiology” (17). In both cases, one of the end products is acid hypersecretion. The lactose is the most common provocateur of hydrochloric acid hypersecretion (18). It causes the release of histamine from mast cells, which, through a chain of mediators, leads to the hypersecretion of hydrochloric acid. There are patients with histamine intolerance (19) and others. Thus, the hypersecretion of hydrochloric acid is the cause of all acid-dependent diseases (esophagitis, GERD, stomach ulcer and gastritis, duodenal ulcer and duodenitis, sphincter of Oddi dyskinesia and cholecystitis, as well as SMAS). As a rule, one of these problems, to a greater or

661 lesser extent, is present in every patient with Ochsner's  
662 sphincter dyskinesia.

663  
664

### 665 5.3. Pathogenesis

666

667 Prolonged duodenal irritation with low-pH hydrochloric  
668 acid causes an increase in the tone of Ochsner's sphincter,  
669 which gradually leads to wall hypertrophy, as Ochsner saw  
670 during the operation. If normally a fleeting contraction of  
671 the sphincter Ochsner is recorded as a pendulum movement  
672 of the bolus, then with dyskinesia, a narrowing of the  
673 intestine is clearly recorded. However, it is necessary to  
674 distinguish between the contraction of the sphincter Ochsner  
675 without disturbing the bolus evacuation into the jejunum,  
676 with obstruction of the duodenum, which is characterized  
677 by the expansion of the stomach and duodenum and is  
678 accompanied by vomiting.

679

680

### 681 5.4. Diagnosis

682

683 As shown above, the magnitude of the AMA and the distance  
684 between the aorta and the SMA are proportional to the  
685 BMI. This means that a decrease in these parameters only  
686 indicates the thinness of patients. Therefore, their definition  
687 on CT, MRI, and US does not make any sense. Two clinical  
688 conditions must be distinguished: (a) For symptoms of  
689 intestinal obstruction that are accompanied by recurring  
690 vomiting, a radiography is shown to determine the level of  
691 obstruction and the size of the stomach and duodenum. (b)  
692 Abdominal pain, weight loss, and other symptoms of acid-  
693 related disease require a barium x-ray. If sphincter Ochsner  
694 dyskinesia is detected, gastroscopy should be the next step  
695 to rule out other acid-related disorders and insertion of an  
696 enteral feeding catheter.

697

698

### 699 5.5. Treatment

700

701 Based on our hypothesis, dyskinesia of the sphincter Ochsner  
702 is caused by hypersecretion of hydrochloric acid and  
703 the pathogenetic treatment should be aimed at reducing  
704 the hydrochloric acid release and removing it from the  
705 duodenum. As the literature analysis has shown, the most  
706 effective are nasogastric decompression with nasojejunal  
707 feeding. In patients without obstruction of the duodenum,  
708 the use of PPI 40 mg twice a day for 4 weeks is justified.  
709 ~~In patients with obstruction of the duodenum, the high-~~  
710 ~~dose PPI therapy (intravenous loading dose followed by~~  
711 ~~continuous infusion) (20, 21) until the sphincter Ochsner is~~  
712 ~~fully opened, followed by a transition to oral PPI reception.~~

713 The duodenal irrigation with alkaline solution is  
714 theoretically justified. In the absence of the effect of  
715 drug treatment to relieve spasm of the sphincter Ochsner, the

716 use of Botox injections is justified. With sphincter Ochsner  
717 dyskinesia, there is no place for surgical treatment.

718  
719

## 720 Author contributions

721

722 The author confirms being the sole contributor of this work  
723 and has approved it for publication.

724

725

726

727

728

729

730

731

732

733

734

735

736

737

738

739

740

741

742

743

744

745

746

747

748

749

750

751

752

753

754

755

756

757

758

759

760

761

762

763

764

765

766

767

768

769

770

771

772

773



771	17. Konturek P, Brzozowski T, Konturek S. Stress and the gut: pathophysiology, clinical consequences, diagnostic approach and treatment options. <i>J Physiol Pharmacol.</i> (2011) 62:591–9.	state of the art. <i>Biomolecules.</i> (2020) 10:1181. doi: 10.3390/biom10081181	826
772			827
773	18. Minenna M, Palieri A, Panella C, Ierardi E. Gastro-oesophageal reflux disease and lactose malabsorption: casual comorbidity or neglected association? <i>Dig Liver Dis.</i> (2006) 38:437–8. doi: 10.1016/j.dld.2006.01.013	20. Barkun A, Almadi M, Kuipers E, Laine L, Sung J, Tse F, et al. Management of nonvariceal upper gastrointestinal bleeding: guideline recommendations from the international consensus group. <i>Ann Intern Med.</i> (2019) 171:805–22. doi: 10.7326/M19-1795	828
774			829
775			830
776			831
777	19. Comas-Basté O, Sánchez-Pérez S, Veciana-Nogués M, Latorre-Moratalla M, Vidal-Carou M. Histamine intolerance: the current	21. Pang S, Graham D. A clinical guide to using intravenous proton-pump inhibitors in reflux and peptic ulcers. <i>Therap Adv Gastroenterol.</i> (2010) 3:11–22. doi: 10.1177/1756283X09352095	832
778			833
779			834
780			835
781			836
782			837
783			838
784			839
785		<i>Levin</i>	Введите текст
786			840
787			841
788			842
789			843
790			844
791			845
792			846
793			847
794			848
795			849
796			850
797			851
798			852
799			853
800			854
801			855
802			856
803			857
804			858
805			859
806			860
807			861
808			862
809			863
810			864
811			865
812			866
813			867
814			868
815			869
816			870
817			871
818			872
819			873
820			874
821			875
822			876
823			877
824			878
825			879
			880